

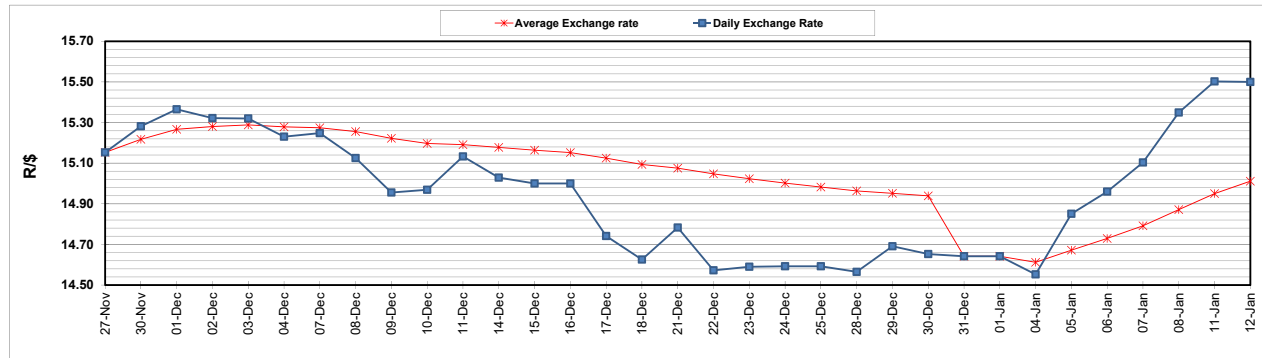
	PETROL 95 ULP	PETROL 93 ULP & LRP	DIESEL 0.05%	DIESEL 0.005%	ILL. PAR.
GAUTENG PUMP PRICE (SA c/l) AS FROM 06/01/2021	1,486.000	1,469.000	-	-	-
WHOLESALE PRICE (SA c/l) AS FROM 06/01/2021	-	-	1,300.420	1,301.820	739.688
SINGLE NATIONAL MAXIMUM RETAIL PRICE	-	-	-	-	930.000
BASIC FUEL PRICE - 12/01/2021 (SA c/l)	627.671	619.265	621.098	622.769	609.871
PRESS RELEASE CONTRIBUTION TO BFP 06/01/2021 - 12/01/2021 (SA c/l)	519.170	512.170	541.630	543.030	527.128
UNIT OVER/(UNDER) RECOVERY - 12/01/2021 (SA c/l)	(108.501)	(107.095)	(79.468)	(79.739)	(82.743)
AVERAGE BASIC FUEL PRICE 31/12/2020 - 12/01/2021	575.710	568.963	574.759	576.895	562.987
AVERAGE UNIT OVER/(UNDER) RECOVERY 31/12/2020 - 12/01/2021	(74.318)	(75.904)	(57.573)	(57.865)	(60.303)

### ANALYSIS MOVEMENT OF AVERAGE OVER/(UNDER) RECOVERY

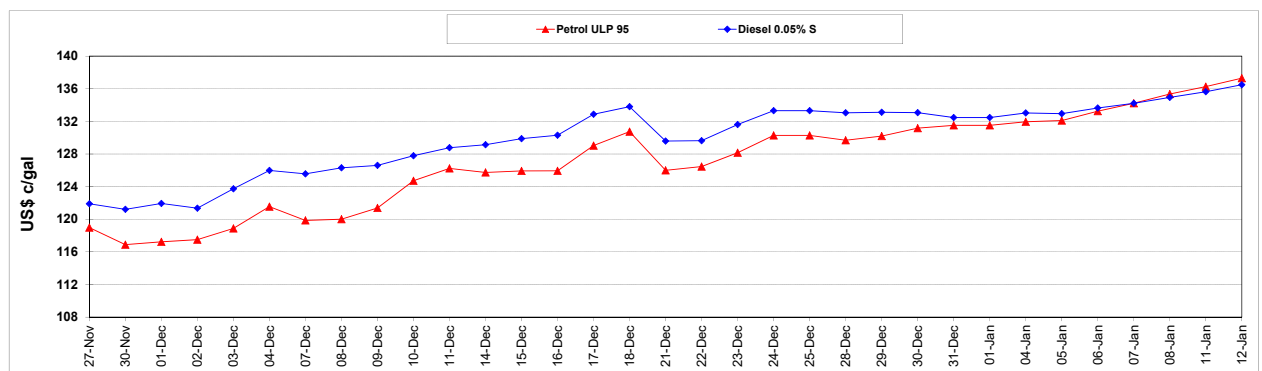
	PETROL 95	PETROL 93	DIESEL 0.05%	DIESEL 0.005%	ILL. PAR.
- MOVEMENT IN INTERNATIONAL PRODUCT PRICES	(71.545)	(73.164)	(54.805)	(55.086)	(57.591)
- MOVEMENT IN EXCHANGE RATE	(2.773)	(2.740)	(2.768)	(2.779)	(2.712)
AVERAGE UNIT OVER/(UNDER) RECOVERY 31/12/2020 - 12/01/2021	(74.318)	(75.904)	(57.573)	(57.865)	(60.303)

**R/\$ EXCHANGE RATE - (R/\$15.5000 - 12/01/2021)**

### EXCHANGE RATE USED IN BASIC FUEL PRICE



### INTERNATIONAL PRODUCT PRICES OF BASKET USED IN BASIC FUEL PRICE



### BASIC FUEL PRICE IN SA CENTS PER LITRE

